



**BRANDED CLOTHING**



## GARMENTS AVAILABLE:

*CROPPED SWEATERS*

*PULLOVER CROPPED HOODIES*

*SLEEVELESS HOODIES*

*MENS SPORTS VESTS*

*CROPPED ZIP UP HOODIES*

*WOMENS DANCE VESTS*

*PULLOVER HOODIES*

*ZIP UP HOODIES*

*GAME DAY HOODIES*

*MENS POLO SHIRTS*

*WOMENS POLO SHIRTS*



Choose your own items



Pick the colours you want



Decide how it's personalised

**YOUR STYLE - YOUR SOCIETY**

SOUTH  
MANCHES  ER  
A O S

SOUTH  
MANCHES  ER  
A O S

SOUTH  
MANCHES  ER  
A O S

SOUTH  
MANCHES  ER  
A O S

SOUTH  
MANCHES  ER  
A O S

SOUTH  
MANCHES  ER  
A O S

SOUTH  
MANCHES  ER  
A O S

SOUTH  
MANCHES  ER  
A O S

## PERSONALISE IT

*An option with most of the garments is to have the  
WORKER BEE or YOUR NAME on the top left*





# CROPPED SWEATER

JH035

Feminine relaxed fit. Crew neckline. Cropped cut with drop shoulder design. Twin-needle stitching. Raw edge hem with cover stitching. Brushed inner fleece. Ribbed cuffs and hem.

## Fabric

80% Ringspun cotton, 20% Polyester

## Weight

280gsm

## Sizes available -

XXS (size 6)

XS (size 8)

S (size 10)

M (size 12)

L (size 14)

XL (size 16)



Dusty Pink



Heather Grey



Arctic White



Deep Black

LOGO AVAILABLE  
ON FRONT OR BACK



YOUR NAME  
OR  
WORKER BEE



**CROPPED SWEATER**  
WOMENS

# PULLOVER CROPPED HOODIE

JH016

## Cropped Hoodie (no zip)

Girlie relaxed fit. Cropped cut with drop shoulder design. Kangaroo pouch pocket. Twin-needle stitching detail. Raw edge hem with cover stitching. Double fabric hood. Flat lace drawcords. Brushed inner fleece.

Combine comfort and style with this cropped hoodie. Pair with jeans or leggings for a spot on-trend look.

**Fabric**  
80% Ringspun cotton, 20% Polyester

**Weight**  
280gsm

### Sizes available -

XXS - (size 6)

XS - (size 8)

S - (size 10)

M - (size 12)

L - (size 14)

XL - (size 16)



Arctic White



Dusty Pink



Heather Grey



Jet Black



LOGO AVAILABLE  
ON FRONT OR BACK



YOUR NAME  
OR  
WORKER BEE

PULLOVER  
CROPPED HOODIE  
WOMENS

# SLEEVELESS HOODIE

## JH057

### Sleeveless zoodie

Sleeveless zipped hoodie with metal YKK zipper. Twin needle stitching detailing. Double fabric hood. Contrast flat white drawcords. Hanging loop at back neck. Kangaroo pouch pocket. Ribbed binding detail around armhole. Ribbed hem. Worldwide Responsible Accredited Production (WRAP) certified production.

A popular addition to gym wear wardrobes, this hoodie features a full metal zipper and contrast drawcords and is ideal for warming up or cooling down.

#### Fabric

80% Ringspun cotton, 20% Polyester

#### Weight

280gsm

#### Sizes available -

S - 36" chest

M - 40" chest

L - 44" chest

XL - 48" chest

XXL - 52" chest



Heather Grey



Jet Black



Charcoal



Oxford Navy



YOUR NAME  
OR  
WORKER BEE

# SLEEVELESS HOODIE

UNISEX



Made from a lightweight Neoteric™ fabric and with a sporty fit and curved back hem, this vest has been designed to keep you cool and comfortable whilst working up a sweat. Uncompromising in design simplicity this vest provides unrestricted performance in letting you push towards your goals.

**Fabric**  
100% Polyester

**Weight**  
140gsm

**Sizes available -**

S - 34" chest

M - 38" chest

L - 41" chest

XL - 44" chest

XXL - 47" chest



YOUR NAME  
OR  
WORKER BEE



LOGO AVAILABLE  
ON FRONT OR BACK

# SPORTS VEST

JC007



## SPORTS VEST

MENS

Twin needle stitching detailing. Double fabric hood. Contrast white drawcords. Kangaroo pouch pocket. Ribbed cuff and hem. Worldwide Responsible Accredited Production (WRAP) certified production.

Ideal for yoga, dance and gym classes, this hoodie is a must have addition for a versatile wardrobe. It is made in a cropped style with zipped front and features a feminine fit.

**Fabric**

80% Ringspun cotton, 20% Polyester

**Weight**

280gsm

**Size available -**

XXS - (size 6)

XS - (size 8)

S - (size 10)

M - (size 12)

L - (size 14)



Jet Black



Heather Grey



Hot Pink



# CROPPED ZIP HOODIE

JH056

**CROPPED ZIP HOODIE**  
WOMENS



# DANCE VEST

## JC015

Uncompromising in design simplicity, this vest provides unrestricted performance letting you push towards your goals. Crafted from a lightweight, Neoteric™ fabric to wick sweat away from the skin. The scoop neckline and racer back style ensure a natural range of movement whilst working up a sweat.

**Fabric**  
100% Polyester

**Weight**  
140gsm

Sizes available:

XS (size 8)

S (size 10)

M (size 12)

L (size 14)

XL (size 16)



Arctic White



Electric Pink



French Navy



Fire Red



Hot Pink



Jet Black



Kelly Green



Purple



Royal Blue



Sapphire Blue



Sun Yellow



Electric Green



Electric Orange



Charcoal



Electric Yellow



Sherbet Lemon

LOGO AVAILABLE  
ON FRONT OR BACK

YOUR NAME  
OR  
WORKER BEE



**DANCE VEST**  
WOMENS

# PULLOVER HOODIE

## JH001



Twin-needle stitching detailing, double fabric hood, kangaroo pouch pocket. Ribbed cuffs and hem. Worldwide Responsible Accredited Production (WRAP) certified production. Brushed inner fabric.

This simple and stylish classic hoodie is available in many vibrant colours. Made from cotton faced fabric, it is an essential for any hoodie lover.

**Fabric**  
80% Ringspun cotton, 20% Polyester. Smoke Colours: 70% Ringspun cotton, 30% Polyester

**Weight**  
280gsm

**Sizes available -**

XS - 34" chest

S - 36" chest

M - 40" chest

L - 44" chest

XL - 48" chest

XXL - 52" chest

XXXL - 56" chest

4XL\* - 60" chest

5XL\* - 62" chest



LOGO AVAILABLE  
ON FRONT OR BACK

YOUR NAME  
OR  
WORKER BEE

PULLOVER  
HOODIE  
UNISEX

\*4XL & 5XL only available in colours marked with a \*



# ZIP UP HOODIE

## JH050

Full zip hoodie with double fabric hood and kangaroo pouch pocket. Worldwide Responsible Accredited Production (WRAP) certified production. Brushed inner fleece.

made in a classic fit with a brushed inner fleece. Fashioned from soft cotton faced fabric for a relaxed casual look.

**Fabric**  
80% Ringspun cotton, 20% Polyester

**Weight**  
280gsm



YOUR NAME  
OR  
WORKER BEE

### Sizes available -

S - 36" chest

M - 40" chest

L - 44" chest

XL - 48" chest

XXL - 52" chest

XXXL\* - 56" chest

4XL\* - 60" chest

5XL\* - 62" chest



Arctic White



Bottle Green



Charcoal



Fire Red



Hawaiian Blue



Heather Grey\*



Hot Pink



Jet Black\*



Kelly Green



Oxford Navy



Purple



Red Hot Chili



Royal Blue



Sapphire Blue



Steel Grey



New French Navy\*



Burgundy



Forest Green



Orange Crush



Sun Yellow



Ash



Storm Grey



Black Smoke



Mustard

XXXL 4XL and 5XL only available in colours marked with a \*

# ZIP UP HOODIE

## UNISEX



# GAME DAY HOODIE

JH103

Heavyweight hoodie. Stripe detailing on sleeve. Regular fit. Double fabric hood with single Jersey contrast inner. Twin-needle stitching detail. Set-in sleeves. Kangaroo pouch pocket. ribbed cuffs and hem. Brushed inner fleece.

A hoodie you'll want to wear over and over again. Made from cotton blend fabric for soft handle. It's cut to a regular fit that's comfortable to wear. Stripe detailing on sleeves for an athletic look.

#### Fabric

70% Ringspun cotton, 30% Polyester

#### Weight

330gsm

#### Sizes available -

XS - 32" chest

S - 36" chest

M - 40" chest

L - 44" chest

XL - 48" chest

XXL - 52" chest

XXXL - 56" chest



LOGO AVAILABLE  
ON FRONT OR BACK



YOUR NAME  
OR  
WORKER BEE

# GAMEDAY HOODIE

UNISEX

# POLO SHIRT

## AQ015

Classic fit polo, ribbed knit collar and sleeve cuffs. Twin needle stitching on hem. Buttons on placket.

Features technical wicking fabric helping to regulate body temperature and keep you feeling fresh. A stylish sport and athleisure essential.

**Fabric**  
65% Polyester, 35% Cotton

**Weight**  
200gsm

### Sizes available -

S - 37" chest

M - 40" chest

L - 42" chest

XL - 44" chest

XXL - 47" chest

XXXL - 49" chest

4XL\* - 51" chest

5XL\* - 53" chest

4XL and 5XL only available in colours marked with a \*



YOUR NAME  
OR  
WORKER BEE



**POLO SHIRT**  
MENS

# POLO SHIRT

## AQ025

Classic fit polo for women, ribbed knit collar and sleeve cuffs. Twin needle stitching on hem.

Perform in style in this women's polycotton polo. This practical wardrobe piece with added wicking technology will help you keep cool, dry and stylish whatever the task. Ideal for office, leisure or sport, this style is an all-rounder.

**Fabric**  
65% Polyester, 35% Cotton

**Weight**  
200gsm

Sizes available -

XS - (size 8)

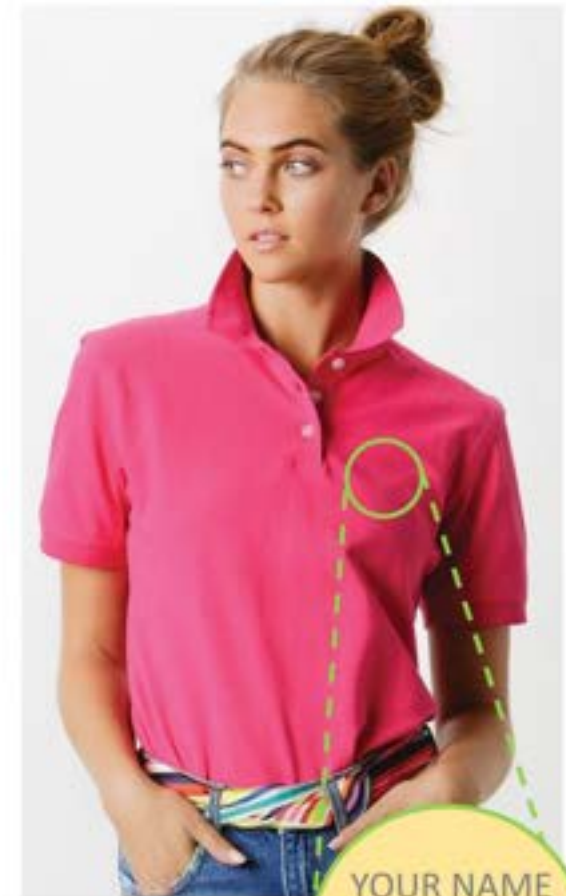
S - (size 10)

M - (size 12)

L - (size 14)

XL - (size 16)

XXL - (size 18)



YOUR NAME  
OR  
WORKER BEE

# POLO SHIRT

## WOMENS



# MESSENGER BAG

## BG651

Full cotton lining. Antique brass effect fittings. Zippered organiser section under front flap. Internal slip pocket. Padded base. Rip-Strip™ closure. Adjustable shoulder strap.

**Dimensions**

37 x 29 x 11cm

**Capacity**

13 Litres

**Weight**

540g

**Washing Instructions**

Sponge clean only

**Fabric**

100% Cotton



Grey



Black



Pebble



Navy



Military Green



# MESSENGER BAG

Can be carried by hand or over the shoulder. Handle length 58cm.

**Dimensions**  
32 x 35 x 12cm

**Capacity**  
16 Litres

**Embroidery**  
18 Tubular hoop

**Washing Instructions**  
Sponge clean only

**Fabric**  
100% Organic cotton 170gsm

**Weight**  
98g

# TOTE BAG

WM180



Black



Natural



White



Navy



Fuchsia



Kelly Green



Graphite Grey



# TOTE BAG



*FIT*

*FABRIC*

*STYLE*

*COLOUR*



## *PRICE LIST*

<b>CROPPED SWEATERS</b>	£21
<b>PULLOVER CROPPED HOODIES</b>	£21
<b>SLEEVELESS HOODIES</b>	£25
<b>MENS SPORTS VESTS</b>	£15
<b>CROPPED ZIP UP HOODIES</b>	£23
<b>WOMENS DANCE VESTS</b>	£15
<b>PULLOVER HOODIES</b>	£21
<b>ZIP UP HOODIES</b>	£23
<b>GAME DAY HOODIES</b>	£25
<b>MENS POLO SHIRTS</b>	£17.50
<b>WOMENS POLO SHIRTS</b>	£17.50
<b>MESSENGER BAG</b>	£18.99
<b>TOTE BAG</b>	£8.99
<b>P&amp;P (PER ITEM)</b>	£1



*BE A SHADE MORE DARING*



## PLACE YOUR ORDER ONE FORM PER ITEM

YOUR FULL NAME:

PLEASE CIRCLE THE GARMENT YOU'D LIKE TO PURCHASE:

CROPPED SWEATER

CROPPED HOODIE

SLEEVELESS HOODIE

MENS VEST

CROPPED ZIP HOODIE

QUANTITY:

SIZE:

DANCE VEST

UNISEX HOODIE (NO ZIP)

UNISEX HOODIE (ZIP)

GAME DAY HOODIE

MALE POLO

FEMALE POLO

TOTE BAG

MESSENGER BAG

COLOUR OF ITEM:

COLOUR OF PRINT:

IF THE GARMENT YOU'VE CHOSEN OFFERS YOU ANY OF THE FOLLOWING OPTIONS, PLEASE TICK YOUR SELECTION... (Bags are logo only)

TOP LEFT BREAST:

WORKER BEE

YOUR NAME

LOGO:

FRONT

BACK

*NB: IF YOU'RE HAVING THE LOGO ON THE FRONT YOU WON'T BE ABLE TO HAVE YOUR NAME OR THE WORKER BEE ON THE FRONT*

IF YOU'VE OPTED FOR **YOUR NAME**. PLEASE WRITE HERE, IN CLEAR BLOCK CAPITALS, WHAT TEXT YOU'D LIKE:

TOTAL COST: £  + £1 PER ITEM FOR P&P

WE WILL PLACE AN ORDER WHEN WE HAVE SUFFICIENT QUANTITY. ANNOUNCEMENTS WILL BE MADE VIA EMAIL / ON OUR SOCIAL MEDIA PLATFORMS WHEN AN ORDER DATE IS SET.

YOU WILL BE CONTACTED FOR PAYMENT WHEN THE ORDER DATE APPROACHES.

PLEASE SUBMIT YOUR ORDER TO: [kevin.proctor@smaos.org.uk](mailto:kevin.proctor@smaos.org.uk)

## YOUR STYLE - YOUR SOCIETY

### Washing Instructions

**HOODIES:** Machine wash at 30°. Do not bleach. Tumble dry possible at low heat. Iron inside out on low setting. Do not dry clean. Wash dark colour separately.

**POLO SHIRTS and SWEATERS:** Domestic wash at 30c. Iron inside out on low setting. Do not dry clean. Do not tumble dry.

**VESTS:** Machine wash 30°. Do not bleach. Do not tumble dry. Iron inside out on low setting. Do not dry clean.